

The **GTS Locost 7** is built on an age related Ford Sierra donor and comes SVA'd and fully registered. Optional all new parts with current year registration available.

Suspension

The chassis and suspension are all fully powder coated and design to be used with the GTS shock absorber, which can be found on over 200 Locost world wide. The dampers are adjustable allowing you to vary the ride height and set using corner weights.

Brakes

Vented disks on the front with drums at the rear, disc upgrade available.

De Dion

The car comes with the famous De Dion axle set up giving the best overall weight, unsprung mass and handling performance.

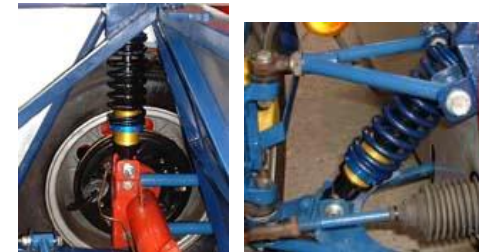
Both Lotus and Caterham have used the De Dion system on the original 7 model, and therefore is in keeping with the inspiration for these modern roadsters.

Body Work

The 10 piece high quality body is made of GRP and comes in a choice of 70 different colours.



GTS Locost 7 at the Exeter Kit Car show



GTS Adjustable suspension



Engine Options:

- ü Ford: OHC, OHV, CVH Zetec and Duratec
- ü Vauxhal 2.0
- ü Toyota 4AGE (16v & 20v)
- ü Fireblade
- ü R1
- ü ZZ9R
- ü Triumph

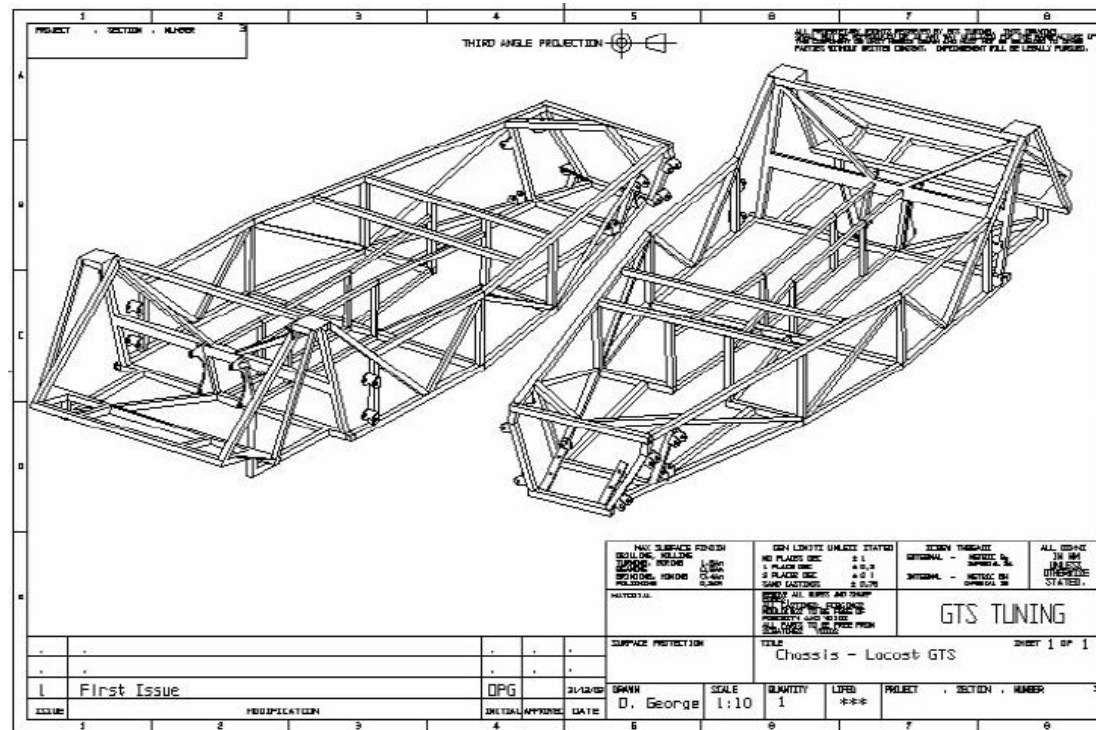
Prices **from £8,000** with Ford OHC, OHV & CVH
£10,700 with Zetec
£12,000 with Duratec
Prices **from £13,000** built with all new parts.

£9,500 with Vauxhal 2.0
£10,000 with Toyota
£10,000 Bike engines except Hyabuse £12, 000

*Prices based on reconditioned units

KitCarBuilds.com

+44 (0)1474 709902 +44 (0)7768 448827 brian@kitcarbuilds.com www.kitcarbuilds.com



Kit prices start **from £2170** guide price of £6,000 to fully complete a car. Consists of: Locost GTS Chassis, Top wishbones, bottom wishbones, wing brackets, set of high quality shock absorbers, De Dion axle, trailing arms and panhard rod, steering rack extensions, poly bush set, suspension nut and bolt pack, mushroom inserts, pedal set, engine mounts, brake pipes kit, aluminium fuel tank, modified Sierra uprights and modified steering column, roll bar and 11 piece fibreglass body set. Chassis and all suspension parts come fully powder coated in a choice of colours with aluminium floor and seat back fitted.

KitCarBuilds.com

+44 (0)1474 709902 +44 (0)7768 448827 brian@kitcarbuilds.com www.kitcarbuilds.com